

KRUGER INDUCED JET FAN (AXIAL REVERSIBLE)

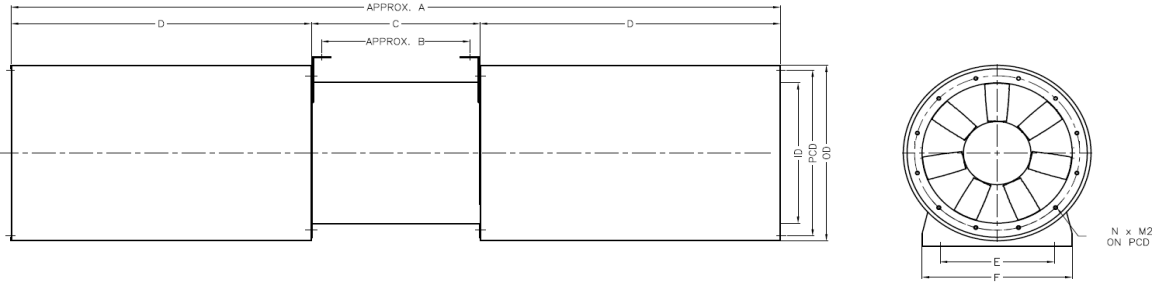


Model IJB 400-R

The IJB-R Series is an axial reversible jet fan designed for effective air induction in pollution control and smoke extraction. Its compact design, wide coverage, and low noise levels make it suitable for applications with limited headroom, like car park ventilation.

	Forward	Reverse			
Air Volume Flow Rate	9,450	9,292	CMH	Rated Power Supply	400/3/50 V/Ph/Hz
Rated Thrust Force	65.20	63.00	N	Motor Insulation Class	H
Discharge Velocity	20.89	20.54	m/s	Minimum Rated Power	2.2 kW
Fan Impeller Power	2.15	2.01	kW	Poles	2 Poles
Operation Direction	Reversible			Rated Speed	2,880 rpm
High Temperature Rating	250°C / 1 Hour			Inverter duty	No
Sound Power Level	90	91	dB(A) 1.5 m. dB(A) 3.0 m.		
Sound Pressure Level	75	77			
(In spherical free field condition)	69	71			

* The AMCA Certified Ratings Seal applies to thrust at free delivery only. Speed (RPM) shown is nominal. Performance is based on actual speed of test.
Performance ratings include the effects of appurtenances on the inlet and outlet.
* Values shown are for inlet Lw(A) sound power levels for installation type A: free inlet, free outlet with partition. The A-weighted sound ratings shown have been calculated per AMCA International Standard 301.
* Sound pressure levels at 3m are measured at free discharge in spherical free field condition, Sound pressure levels at 1.5m and 3.0m are not licensed by AMCA International.
- Power ratings shown are for Kruger motors.
- Performance ratings include the effects of 2D inlet silencer and 2D outlet silencer.
- Performance certified is for installation Type A - Free inlet, Free outlet with partition.
* High temperature rating up to 400°C / 2 Hours is available upon request.

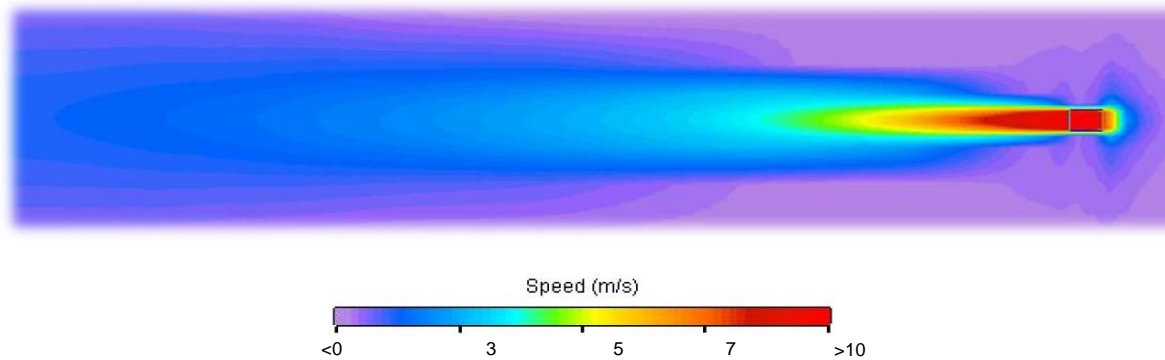


Overall Dimensions

Subscript	A	B	C	D	E	F	OD	ID	PCD	M1	M2	N
Dimension (mm.)	2,050	330	450	800	481	541	500	400	440	10.0	10.0	12

Calculated Centerline Velocity Profile

Distance (m.)	2	4	6	8	10	12	14	16	18	20	22	24	26
Velocity (m/s)	14.57	10.29	7.65	6.18	5.19	4.32	3.71	3.24	2.88	2.59	2.36	2.16	2.00
Distance (m.)	28	30	32	34	36	38	40	42	44	46	48	50	
Velocity (m/s)	1.85	1.73	1.62	1.53	1.44	1.37	1.30	1.24	1.18	1.13	1.08	1.04	



Guangzhou Kruger Ventilation Co.Ltd. Certifies that the IJB400-R series shown herein are licensed to bear the AMCA seal. The ratings shown are based on tests and procedures performed in accordance with AMCA Publication 211 and AMCA Publication 311 and comply with the requirement of the AMCA Certified Ratings Program.